



Taiwan SMEs
Innovation Award



ISO 9001: 2015



Machinery
Directive
Number 1674



IT'S VERY WELL
MADE IN TAIWAN



FAIR FRIEND GROUP



EQUIPTOP HITECH CORP.

NEW GENERATION CONTROL SYSTEM



ESG-818CNC



Taichung
SMEs
Golden hand
award



National
brand
Yushan
Award



Excellent
business
pioneer
and innovative



Innovative
and
customer
satisfaction



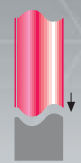
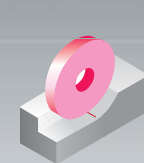
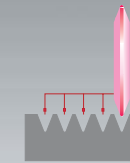
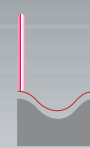
Excellent
manager



National
excellent
managing
award



2018
The Rising Star
Award



► Innovation · Perfection · Technology · Value

HUMANIZED SERVO CONTROL SYSTEM
PRECISION CNC GRINDERS

EQUIPTOP

Experienced Managing Team / Brilliant Quality Policy / Marketing Management Complete Product Series / Fast Service / Innovative R & D Idea.



FEATURES



EXCELLENT



PROVIDE



VALUE



Patent Items

Obtained national patents for grinder:

- Longitudinal straight movement construction of surface grinder.
- Timing belt straight drive system.
- Dual motors, positioning and feeding structure.

More national patents:

- Timing belt drive system for the table of surface grinders.
- Roughing and micro table speed control construction.
- New travel direction change for surface grinding.

Obtained US patents:

- Surface grinding table reverse construction.
- Belt drive construction for surface grinding table.

Obtain German patent:

- Safety handwheel system.

Honored with national patents:

- Multi-formed grinder.
- Dust collect / coolant and dust unit.

- NC & CNC multiple formed molds.
- One wire of table multiple transmission.
- Motor fan cooling structure.
- Simultaneous processor.
- Vacuum wind turbine structure for dust coolant.
- Improvement to dust coolant structure.
- Rotary square structure.
- Equal speed.
- New type double column complex spindle head.
- Milling grinding complex spindle head.

EQUIPTOP Grinder Create New Generation

EXCELLENT · FEATURES · PROVIDE · VALUE

- 1988 Established "EQUIPTOP MACHINERY CO., LTD" Made a speciality of developing high precision surface grinders.
- 1990 Developed ESG-618 & 818 ASD series, 3 axis fully automatic surface grinders. Used PC-CAD to upgrade mechanical design and development.
- 1992 Developed ESG-1228 & 1236 ASD series, 3 axis fully automatic surface grinders.
- 1993 Developed ESG-1632 & 1640 ASD series, 3 axis fully automatic surface grinders.
- 1995 Developed ESG-1020 & 1224 ASD series, 3 axis fully automatic surface grinders. Obtained CE-Mark certificate from AMTRI CE in England.
- 1997 Developed ESG-2448 to 2480, 3axis fully automatic, digital positioning ADX series, with a downfeed jog movement providing just 0.5 μ m super microfeed for finer production finish. Column type surface grinder, using high anti-wear, heavy duty preloaded, H class linear guideway.
- 1998 Awarded ISO 9002 Certification by DNV company of Netherlands.
- 1999 Invested in "NANJING EQUIPTOP PRECISION MACHINERY CO., LTD." as branch in China.
- 2000 Developed ESG-3260 to 32120, 3axis fully automatic, smart digital positioning ADX series Reveived certified CE-MARK by DNV company.
- 2001 Awarded Certified ISO 9000 by Bell company. Developed NC series, 3 axis fully automatic smart digital positioning grinders.
- 2002 Grand Opening of a new factory. The new facility is over 13,000m². Invested 1.6 hundred million dollars in this new headquarters. Successfully developed new complex grinders, moving EQUIPTOP into the high technology area. Renamed the company as "**EQUIPTOP HITECH CORP.**"
- 2003 Awarded publication 2000 ISO 9001 certification. Developed "ASD II " series, 3 axis, fully automatic digital positioning grinders. Developed "ACUMEM " super microfeed servo control and auto-wheel dressing & compensation system grinders.
- 2004 Established the branch in Wu Hsi-Shuai Hung Precision Machinery LTD. to expand China market. Developed cantilever type ESG-6120~8300 ASD*series, 3 axis, fully automatic surface grinders.
- 2005 Obtained the prize of Taiwan Precision Product in manufacturing NC surface profile grinder.
- 2006 Developed ETM510APC tapping machine with auto pallet changer system & Double column grinding machine, table size 1500x3000~1500x5000 are available.
- 2008 Double column grinding machine, table size 1500x3000~1500x5000 are available.
- 2010 Upgrade ASD II series to TD type. PLC control & touch color screen.
- 2012 Double column type grinding machine, table size 1200x3000~1200x5000 are available. Developed ESG-2448 to 24120, 3axis fully automatic TD type with touch color screen.
- 2013 Execute rotary & square constitute, hydrostatic spindle and guide rail program. Presented EMV-600APC auto pallet change, and 800 x2000~5000mm, 1000x2000~5000 mm double column grinders.
- 2016 Developed and officially listed ECG-CNC Cylindrical Grinder series. Innovation patented invention:
1. Innovation surface grinding machine controller: Patent No.:1546161
2. Innovation equal feeding speed control: Patent No.:M454893
3. Innovation rotary & square constitute design: Patent No.:1508818 & M454892
4. Innovation multi-sound alarm light structure: Patent No.: M486838
2016 Create 1224-TD Plus Man-machine PLC controller. Publish ECG-27 / ECG-36 CNC Cylindrical grinding machine with man-machine controller. Develop ERG-600 ERG-800 ERG-1000 CNC/PLC controller application.



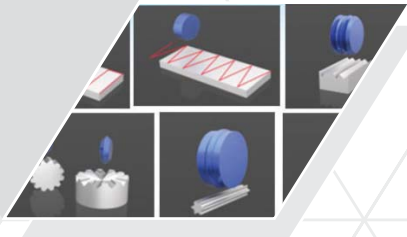
- 2017 Presented at TIMTOS, March 2017, 1224-TD Plus, EG-36 CNC and ERG-600CNC, with man-machine controller. The operation and application showed In an Industrial 4.0 demonstration line.
Wining with honor: D&B TOP 1000 SMEs Elite Award
The 14th National brand: Remarkable enterprise Yushan Award.
Taichung city the 16th excellent SMEs Golden hand award.
Republic of China prominent enterprise management association, the 18th golden peak award:
Top 10 excellent business pioneer model.
Republic of China prominent enterprise management association, the 18th golden peak award:
Top 10 remarkable innovative research and development
- 2018 Golden torch prize: TD, ADC get Research and Innovation Award.
Golden torch prize: TD, ADC have the honor to win best satisfaction from customer.

Create New Generation ESG-818 CNC / ESG-818H CNC

EQUIPTOP



High-precision accuracy
Backlash within 2um
High strength, rigidity
High stability
Min. setting 0.001mm



Surface grinding & step grinding
Multi-shape forming grinding
Indexing & slot grinding
Profile grinding
Punch forming grinding



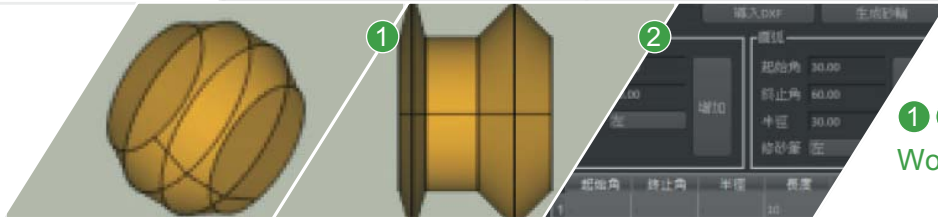
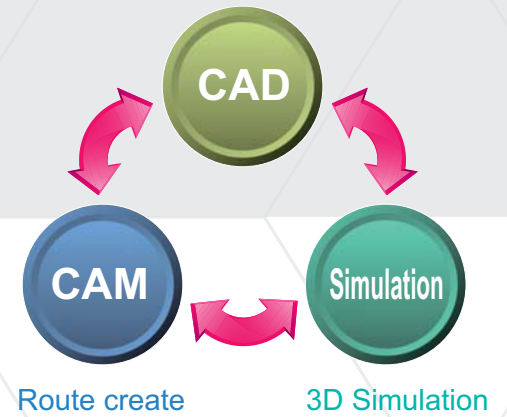
ADC with compensation
Multi-shape dressing
Dynamic Balance system



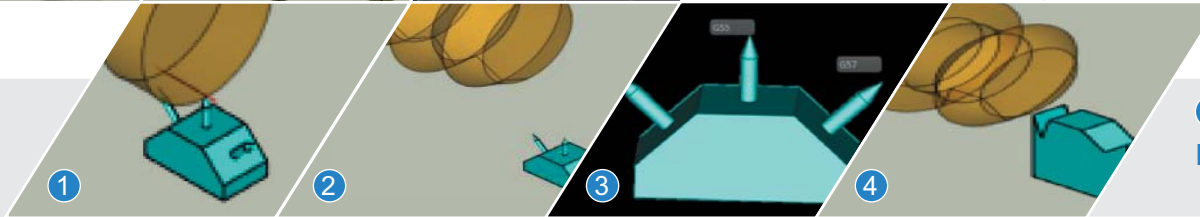
- The slide way of Column are box way designed, high rigidity & precision.
- C2 class ballscrew used for 3 axis & servo motor direct transmission.
- Double V way for crossfeed & longitudinal axis, equipped with auto lubrication system to ensure the accuracy and finish for grinding.
- Hand-scraped & coated with "Turcite-B" for longitudinal & cross-feed guideways, providing fully support for table travel.

CAD / CAM Software for 3D Shape and Surface Grinding

Work-piece, grinding wheel design

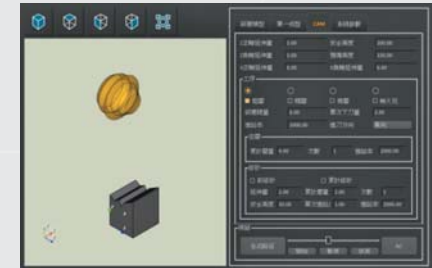
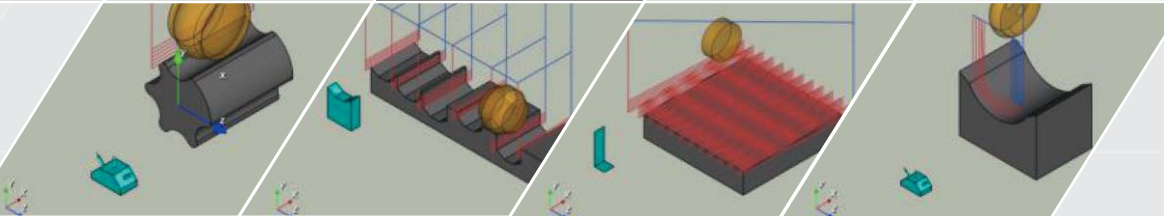


① ②
Work-piece & grinding wheel design

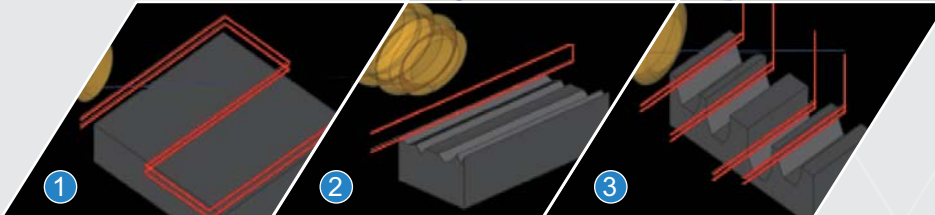


① ② ③ ④
Route create

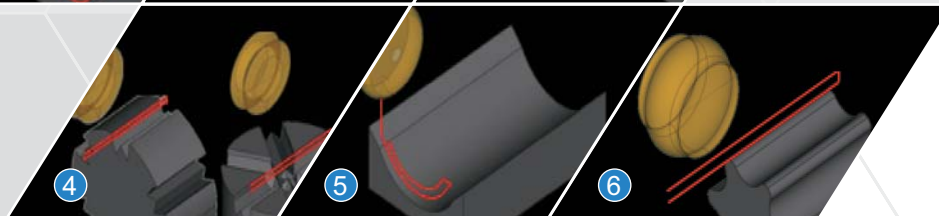
3D Simulation



3D Shape Grinding CAD/CAM



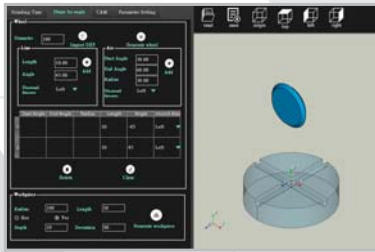
① ② ③ ④ ⑤ ⑥
Route create Surface Grinding



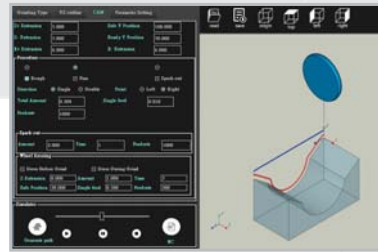
- ◆ Very easy to operate, don't have to write a program
- ◆ Multi-function grinding mode-Step, Continuous, Slot, Multi-slot, indexing
- ◆ 15" LED color touch screen
- ◆ Use the drawing function to generate grinding wheels and workpieces
- ◆ Automatic dressing with compensation during grinding cycle.
- ◆ The workpiece and the grinding wheel are presented in 3D and the finished product is directly viewed.

ESG-818CNC CAD / CAM Software

EQUIPTOP



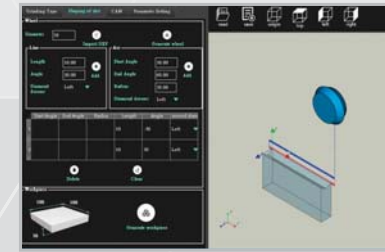
Angle



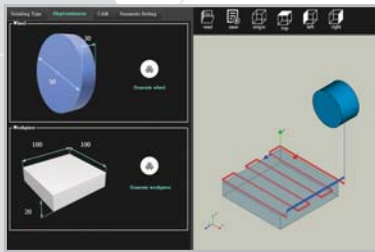
CAM



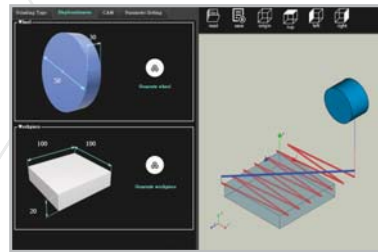
Forming



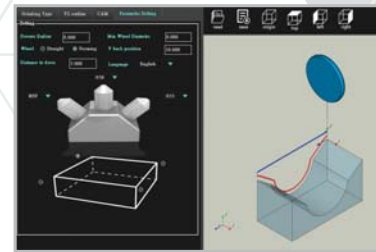
Slot



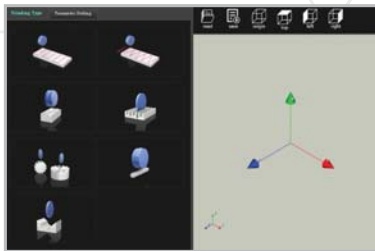
Set 1



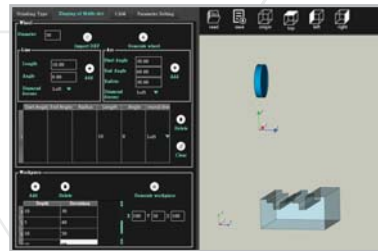
Set 2



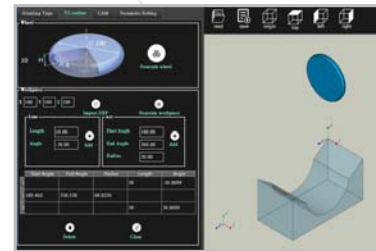
Setting



Main



Multi Slot



YZ

- ◆ Automatic calculation of indexing and grinding amount
- ◆ Servo gain adjustment can be performed directly on the controller screen
- ◆ MLC real time monitoring
- ◆ It can directly back up the parameters and servo parameters to the computer for easy maintenance or replacement of the servo drive.

Intelligence controller system

Easy operate / Drawing GUI system
Working process viewed



ESG-818CNC SPECIFICATION

Model	item	ESG-818 CNC / ESG-818H CNC
TABLE	Table size	460x203 mm
	Table Max. loading weight	200 kg
	Standard magnetic chuck size	450x200 mm
	Max. distance from spindle center to table	460 mm
	T slot	12x1
Longitudinal movement of table	X axis movement speed	0-20 m/min
	X axis max. travel	510 mm
Cross transverse travel	Z axis movement speed	0-3 m/min
	Z axis max. travel	260 mm
	Z axis min. input unit	0.001 mm
Wheelhead vertical infeed	Y axis movement speed	0-3 m/min
	Y axis max. travel	390 mm
	Y axis min. input unit	0.001 mm
Spindle	Spindle speed	3600 rpm
	Spindle power	5HP / 2P
Grinding wheel	Wheel size	203x19x31.75 mm
Motor	Hydraulic Motors (for X axis Hydraulic)	1.5 HP (for ESG-818H CNC)
	Longitudinal Movement Motor	2.0 KW
	Cross Feed Motor	1.0 KW
	Vertical Feed Motor	1.0 KW
	Rated horsepower	8.0 KW

The manufacturer reserves the right to modify the design, specifications, mechanisms, etc., To improve the performances of the machine without notice. All the specifications show below are just for reference.

EQUIPTOP®



"EQUIPTOP" means "TOP EQUIPMENT" A Wise Choice-EQUIPTOP.



EQUIPTOP HITECH CORP.

NO. 88, SAN FENG E. RD., HOULI DISTRICT,
TAICHUNG CITY, TAIWAN 42156

■ TEL: +886-4-25576060

■ e-mail: equiptop@hibox.hinet.net

■ FAX: +886-4-25569677.25575866

■ <http://www.equiptop.com.tw>

www.equiptop.com.tw